

# Nature takes its course

An 18-hole golf course and open space define this estate, writes **Mary Costello**.

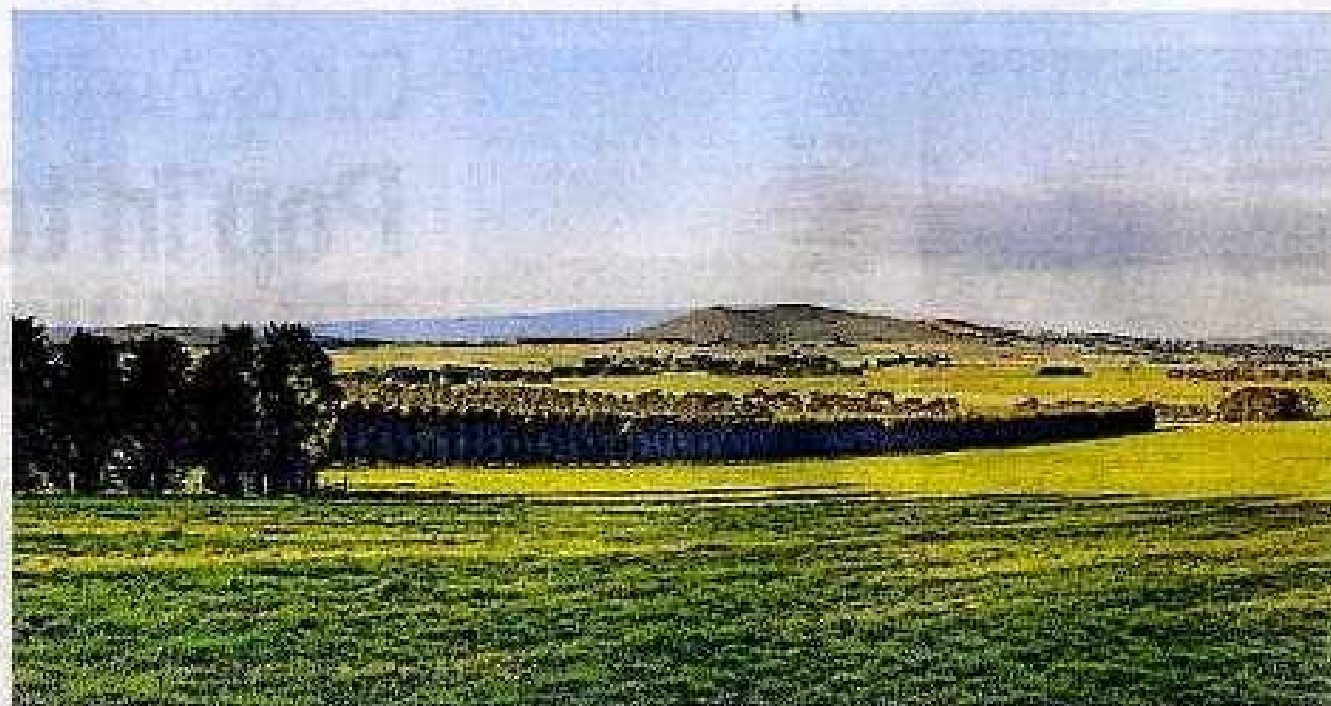
**I**T WAS from the top of Mount Fraser that explorers Hamilton Hume and William Hovell first sighted Port Phillip Bay. The monument at the foot of what was then Mount Bland reportedly reads, "From this mount, the explorers first sighted their objective". That's not quite true. Their objective was Western Port, but after all their trekking, climbing and river crossings, any glimpse of sea would have been welcome.

Mount Fraser, with its two gentle humps — actually volcanic craters — still dominates the superb landscape around the tiny township of Beveridge, 40 kilometres north of

Melbourne on the Hume Highway. Over the next few years, this beautiful place will become home to about 6000 new residents with the development of Mandalay at Beveridge.

The new 260-hectare estate will be built around an 18-hole golf course. Course designers Thomson Perrett, who have worked extensively throughout Asia and Australia, have been acclaimed for their sustainable landscaping, and with up to 40 per cent of land reserved for open space, parks and walking paths, sustainability is a key focus. Class A recycled water will be piped to all homes, and used on the golf course and parks.

Construction is under way at Mandalay, and the first land release will take place this weekend. The 43 home sites on offer range in size from 476 square metres to 748 square metres, and are priced between about \$126,000 and \$178,000. Some blocks back on to the golf course, and all have views over the nearby hills, including Mount Fraser.



Mandalay at Beveridge takes in views of nearby hills, including Mount Fraser.

The focal point of the 77-hectare golf course will be Club Mandalay — an architecturally designed club house with restaurant, bar, shops, gym, pool and tennis courts. The masterplan also makes provision for a community centre, a kindergarten, and maternal health care centre, a school, retail precinct and a potential "active retirement" neighbourhood.

Beveridge proper lies on the other side of the freeway, along the country road that was the original Hume Highway. The handsome 1860s blue-stone building on the left is the original Post and Telegraph Office. It has been extended, and now accommodates a general store, restaurant, tavern and beer garden. Melbourne's early foodhubs used to depart from

here, and are commemorated in prints and hunting paraphernalia in the tavern room, which also features the original stone fireplace.

Beveridge is Kelly country. Ned was born and spent his early childhood in the homestead built by his father, John "Red" Kelly, which still stands on the corner of Kelly and Stewart streets. The house, which dates from 1859, is on the Victorian Heritage Register but, surprisingly, is yet to be fully restored.

There are primary schools at Beveridge and Wallan, while secondary schools within reach include Wallan and Whittlesea Secondary colleges, the Kilmore International School and Assumption College in Kilmore. For tertiary students, there

are NMII campuses at Epping and Whittlesea.

Beveridge is about 40 minutes from the city via the Hume Highway, and five minutes from Wallan, where you will find Wellington Square, a small shopping centre with Coles and Dimmneys. The Wallan library is in the same complex. Epping Plaza, Epping train station and the Northern Hospital are between 12 and 15 minutes by car.

For sports and leisure, there is a community centre at the Beveridge Reserve, with a pony club, tennis courts, playground, barbecue and picnic area. Wallan offers a range of sporting facilities, including the golf course and equestrian centre at Hidden Valley.

**Mandalay at Beveridge**  
**Address:** Lithgow Street — exit the Hume at Beveridge and bear left.  
**Agent:** Oliver Hume, phone 1300 875 707  
**Web:** mandalaybeveridge.com.au  
**Prices:** From \$126,000  
**Metway:** 665 — Insert map.